



## ST MICHAEL & ALL ANGELS C. E. (FOUNDATION) PRIMARY AND PRE-SCHOOL

### SUPPORTING PUPILS WITH MEDICAL CONDITIONS POLICY

This policy is written in support of the Vision and Values of St Michael and All Angels (Foundation) Primary and Pre-School.

|                        |                    |
|------------------------|--------------------|
| <b>Last Updated</b>    | <b>Autumn 2024</b> |
| <b>Next Review Due</b> | <b>Summer 2025</b> |

#### Other policies and procedures

This policy will be supported by the following policies and procedures:

- Special Educational Needs Policy
- Special Educational Needs Information Report
- Asthma Policy
- Complaints Policy
- Equality and Accessibility Plan
- Health and Safety Policy
- Safeguarding Policy

**Respect. Resilience. Responsibility. Confidence. Co-operation. Compassion.**

*Be strong and courageous. Do not be afraid; do not be discouraged, for the Lord your God will be with you wherever you go. – Joshua 1:9*



## ST MICHAEL & ALL ANGELS C. E. (FOUNDATION) PRIMARY AND PRE-SCHOOL

### 1. Aims

This policy aims to ensure that:

- Pupils, staff and parents understand how our school will support pupils with medical conditions
- Pupils with medical conditions are properly supported to allow them to access the same education as other pupils, including school trips and sporting activities

The governing board will implement this policy by:

- Making sure sufficient staff are suitably trained
- Making staff aware of pupil's condition, where appropriate
- Making sure there are cover arrangements to ensure someone is always available to support pupils with medical conditions
- Providing supply teachers with appropriate information about the policy and relevant pupils
- Developing and monitoring individual healthcare plans (IHCPs)

### 2. Legislation and statutory responsibilities

This policy meets the requirements under Section 100 of the Children and Families Act 2014, which places a duty on governing boards to make arrangements for supporting pupils at their school with medical conditions.

It is also based on the Department for Education's statutory guidance: Supporting pupils at school with medical conditions.

The school follows national guidance published by Public Health England when responding to infection control issues.

### 3. Roles and responsibilities

#### 3.1 The governing board

The governing board has ultimate responsibility to make arrangements to support pupils with medical conditions. The governing board will ensure that sufficient staff have received suitable training and are competent before they are responsible for supporting children with medical conditions.

#### 3.2 The headteacher

The headteacher will:

- Make sure all staff are aware of this policy and understand their role in its implementation.
- Ensure that there is a sufficient number of trained staff available to implement this policy and deliver against all individual healthcare plans (IHPs), including in contingency and emergency situations.
- Take overall responsibility for the development of IHCPs.
- Make sure that school staff are appropriately insured and aware that they are insured to support pupils in this way.

**Respect. Resilience. Responsibility. Confidence. Co-operation. Compassion.**

*Be strong and courageous. Do not be afraid; do not be discouraged,  
for the Lord your God will be with you wherever you go. – Joshua 1:9*



## ST MICHAEL & ALL ANGELS C. E. (FOUNDATION) PRIMARY AND PRE-SCHOOL

- Contact the school nursing service in the case of any pupil who has a medical condition that may require support at school, but who has not yet been brought to the attention of the school nurse.
- Ensure that systems are in place for obtaining information about a child's medical needs and that this information is kept up to date.

### 3.3 Staff

Supporting pupils with medical conditions during school hours is not the sole responsibility of one person. Any member of staff may be asked to provide support to pupils with medical conditions, although they will not be required to do so. This includes the administration of medicines.

Those staff who take on the responsibility to support pupils with medical conditions will receive sufficient and suitable training, and will achieve the necessary level of competency before doing so.

Teachers will take into account the needs of pupils with medical conditions that they teach. All staff will know what to do and respond accordingly when they become aware that a pupil with a medical condition needs help.

Class teachers/allocated staff member will ensure appropriate transitional arrangements are made for when a child starts a new school or undergoing a diagnosis.

### 3.4 Parents

Parents will:

- Provide the school with sufficient and up-to-date information about their child's medical needs
- Be involved in the development and review of their child's IHCP and may be involved in its drafting
- Carry out any action they have agreed to as part of the implementation of the IHCP e.g. provide medicines and equipment

### 3.5 Pupils

Pupils with medical conditions will often be best placed to provide information about how their condition affects them. Pupils should be fully involved in discussions about their medical support needs and contribute as much as possible to the development of their IHCPs. They are also expected to comply with their IHCPs.

### 3.6 School nurses and other healthcare professionals

Our school nursing service will notify the school when a pupil has been identified as having a medical condition that will require support in school. This will be before the pupil starts school, wherever possible.

**Respect. Resilience. Responsibility. Confidence. Co-operation. Compassion.**

*Be strong and courageous. Do not be afraid; do not be discouraged,  
for the Lord your God will be with you wherever you go. – Joshua 1:9*



## ST MICHAEL & ALL ANGELS C. E. (FOUNDATION) PRIMARY AND PRE-SCHOOL

Healthcare professionals, such as GPs and pediatricians, will liaise with the school nurses and notify them of any pupils identified as having a medical condition.

### **4. Equal opportunities**

Our school is clear about the need to actively support pupils with medical conditions to participate in school trips and visits, or in sporting activities, and not prevent them from doing so.

The school will consider what reasonable adjustments need to be made to enable these pupils to participate fully and safely on school trips, visits and sporting activities.

Risk assessments will be carried out so that planning arrangements take account of any steps needed to ensure that pupils with medical conditions are included. In doing so, pupils, their parents and any relevant healthcare professionals will be consulted.

### **5. Being notified that a child has a medical condition**

When the school is notified that a pupil has a medical condition, the process outlined below will be followed to decide whether the pupil requires an IHCP (individual healthcare plan).

The school will make every effort to ensure that arrangements are put into place within 2 weeks, or by the beginning of the relevant term for pupils who are new to our school.

\*See Appendix 1.

### **6. Individual healthcare plans (IHCP)**

The headteacher has overall responsibility for the development of IHPs for pupils with medical conditions. This has been delegated to the Learning Mentor and School Business Manager.

Plans will be reviewed at least annually, or earlier if there is evidence that the pupil's needs have changed.

Plans will be developed with the pupil's best interests in mind and will set out:

- What needs to be done
- When
- By whom

Not all pupils with a medical condition will require an IHCP. It will be agreed with a healthcare professional and the parents when an IHCP would be inappropriate or disproportionate. This will be based on evidence. If there is not a consensus, the headteacher will make the final decision.

**Respect. Resilience. Responsibility. Confidence. Co-operation. Compassion.**

*Be strong and courageous. Do not be afraid; do not be discouraged,  
for the Lord your God will be with you wherever you go. – Joshua 1:9*



## ST MICHAEL & ALL ANGELS C. E. (FOUNDATION) PRIMARY AND PRE-SCHOOL

Plans will be drawn up in partnership with the school, parents and a relevant healthcare professional, such as the school nurse, specialist or paediatrician, who can best advise on the pupil's specific needs. The pupil will be involved wherever appropriate.

IHCPs will be linked to, or become part of, any statement of special educational needs (SEN) or education, health and care (EHC) plan. If a pupil has SEN but does not have a statement or EHC plan, the SEN will be mentioned in the IHP.

The level of detail in the plan will depend on the complexity of the child's condition and how much support is needed. The governing board, Headteacher and the Learning Mentor will consider the following when deciding what information to record on IHPs:

- The medical condition, its triggers, signs, symptoms and treatments.
- The pupil's resulting needs, including medication (dose, side effects and storage) and other treatments, time, facilities, equipment, testing, access to food and drink where this is used to manage their condition, dietary requirements and environmental issues, e.g. crowded corridors, travel time between lessons.
- Specific support for the pupil's educational, social and emotional needs. For example, how absences will be managed, requirements for extra time to complete exams, use of rest periods or additional support in catching up with lessons, counselling sessions.
- The level of support needed, including in emergencies.
- Who will provide this support, their training needs, expectations of their role and confirmation of proficiency to provide support for the pupil's medical condition from a healthcare professional, and cover arrangements for when they are unavailable.
- Who in the school needs to be aware of the pupil's condition and the support required.
- Arrangements for written permission from parents and the headteacher for medication to be administered by a member of staff, or self-administered by the pupil during school hours.
- Separate arrangements or procedures required for school trips or other school activities outside of the normal school timetable that will ensure the pupil can participate, e.g. risk assessments.
- Where confidentiality issues are raised by the parent/pupil, the designated individuals to be entrusted with information about the pupil's condition.
- What to do in an emergency, including who to contact, and contingency arrangements.

### 7. Managing medicines

Prescription and non-prescription medicines will only be administered at school:

- When it would be detrimental to the pupil's health or school attendance not to do so and

**Respect. Resilience. Responsibility. Confidence. Co-operation. Compassion.**

*Be strong and courageous. Do not be afraid; do not be discouraged,  
for the Lord your God will be with you wherever you go. – Joshua 1:9*



## ST MICHAEL & ALL ANGELS C. E. (FOUNDATION) PRIMARY AND PRE-SCHOOL

- Where we have parents' written consent

**The only exception to this is where the medicine has been prescribed to the pupil without the knowledge of the parents.**

Pupils under 16 will not be given medicine containing aspirin unless prescribed by a doctor.

Anyone giving a pupil any medication (for example, for pain relief) will first check maximum dosages and when the previous dosage was taken. Parents will always be informed.

The school will only accept medicines that are:

- In-date
- Labelled with the child's name and dosage
- Provided in the original container, as dispensed by the pharmacist, and include instructions for administration, dosage and storage

The school will accept insulin that is inside an insulin pen or pump rather than its original container, but it must be in date.

All medicines will be stored safely. Pupils will be informed about where their medicines are at all times and be able to access them immediately. Medicines and devices such as asthma inhalers, blood glucose testing meters and adrenaline pens will always be readily available to pupils and not locked away.

Medicines will be returned to parents to arrange for safe disposal when no longer required. All medicines at the end academic year/those out of date will be disposed of in line with relevant guidance.

### **7.1 Controlled drugs**

Controlled drugs are drugs that are subject to high levels of regulation as a result of government decisions about those drugs that are especially addictive and harmful such as opioids, stimulants, depressants, hallucinogens, and anabolic steroids.

All controlled drugs are kept in a secure, locked cupboard/box and only named staff have access. Controlled drugs will be easily accessible in an emergency and a record of any doses used and the amount held will be kept.

### **7.2 Pupils managing their own needs**

Pupils are not allowed to carry their own medicines and relevant devices unless in exceptional circumstances agreed by the head teacher. Staff will not force a pupil to take a medicine or carry out a necessary procedure if they refuse but will follow

**Respect. Resilience. Responsibility. Confidence. Co-operation. Compassion.**

*Be strong and courageous. Do not be afraid; do not be discouraged, for the Lord your God will be with you wherever you go. – Joshua 1:9*



## ST MICHAEL & ALL ANGELS C. E. (FOUNDATION) PRIMARY AND PRE-SCHOOL

the procedure agreed in the IHCP and inform parents so that an alternative option can be considered, if necessary.

### 7.3 Unacceptable practice

School staff should use their discretion and judge each case individually with reference to the pupil's IHP, but it is generally not acceptable to:

- Prevent pupils from easily accessing their inhalers and medication, and administering their medication when and where necessary
- Assume that every pupil with the same condition requires the same treatment
- Ignore the views of the pupil or their parents
- Ignore medical evidence or opinion (although this may be challenged)
- Send children with medical conditions home frequently for reasons associated with their medical condition or prevent them from staying for normal school activities, including lunch, unless this is specified in their IHCPs
- If the pupil becomes ill, send them to the school office or medical room unaccompanied or with someone unsuitable
- Penalise pupils for their attendance record if their absences are related to their medical condition, e.g. hospital appointments
- Prevent pupils from drinking, eating or taking toilet or other breaks whenever they need to in order to manage their medical condition effectively
- Require parents, or otherwise make them feel obliged, to attend school to administer medication or provide medical support to their pupil, including with toileting issues. No parent should have to give up working because the school is failing to support their child's medical needs
- Prevent pupils from participating, or create unnecessary barriers to pupils participating in any aspect of school life, including school trips, e.g. by requiring parents to accompany their child
- Administer, or ask pupils to administer, medicine in school toilets

### 8. Emergency procedures

Staff will follow the school's normal emergency procedures (for example, calling 999). All pupils' IHCPs will clearly set out what constitutes an emergency and will explain what to do.

If a pupil needs to be taken to hospital, staff will stay with the pupil until the parent arrives, or accompany the pupil to hospital by ambulance.

### 9. Training

Staff who are responsible for supporting pupils with medical needs will receive suitable and sufficient training to do so.

The training will be identified during the development or review of IHPs. Staff who provide support to pupils with medical conditions will be included in meetings where this is discussed.

**Respect. Resilience. Responsibility. Confidence. Co-operation. Compassion.**

*Be strong and courageous. Do not be afraid; do not be discouraged,  
for the Lord your God will be with you wherever you go. – Joshua 1:9*





## ST MICHAEL & ALL ANGELS C. E. (FOUNDATION) PRIMARY AND PRE-SCHOOL

The relevant healthcare professionals will lead on identifying the type and level of training required and will agree this with the Headteacher/Learning Mentor/School Business Manager. Training will be kept up to date.

Training will:

- Be sufficient to ensure that staff are competent and have confidence in their ability to support the pupils
- Fulfil the requirements in the IHPs
- Help staff to have an understanding of the specific medical conditions they are being asked to deal with, their implications and preventative measures

Healthcare professionals will provide confirmation of the proficiency of staff in a medical procedure, or in providing medication.

All staff will receive training so that they are aware of this policy and understand their role in implementing it, for example, with preventative and emergency measures so they can recognise and act quickly when a problem occurs. This will be provided for new staff during their induction.

### **10. Record keeping**

The governing board will ensure that written records are kept of all medicine administered to pupils. Parents will be informed, if staff feel appropriate, if their pupil has been unwell at school.

IHCPs are kept in a readily accessible place which all staff are aware of.

### **11. Liability and indemnity**

School is insured through The Risk Protection Arrangement. Administering medicine is deemed a 'usual activity of a school' and is therefore covered under Public Liability Insurance.

If medicine is required, a form is completed by the parent/carer and this is signed when medicine has been given by the member of staff.

### **12. Complaints**

Parents with a complaint about their child's medical condition should discuss these directly with the Headteacher/Learning Mentor/School Business Manager in the first instance.

If the Headteacher/Learning Mentor/School Business Manager cannot resolve the matter, they will direct parents to the school's complaints procedure.

### **Appendix 1**

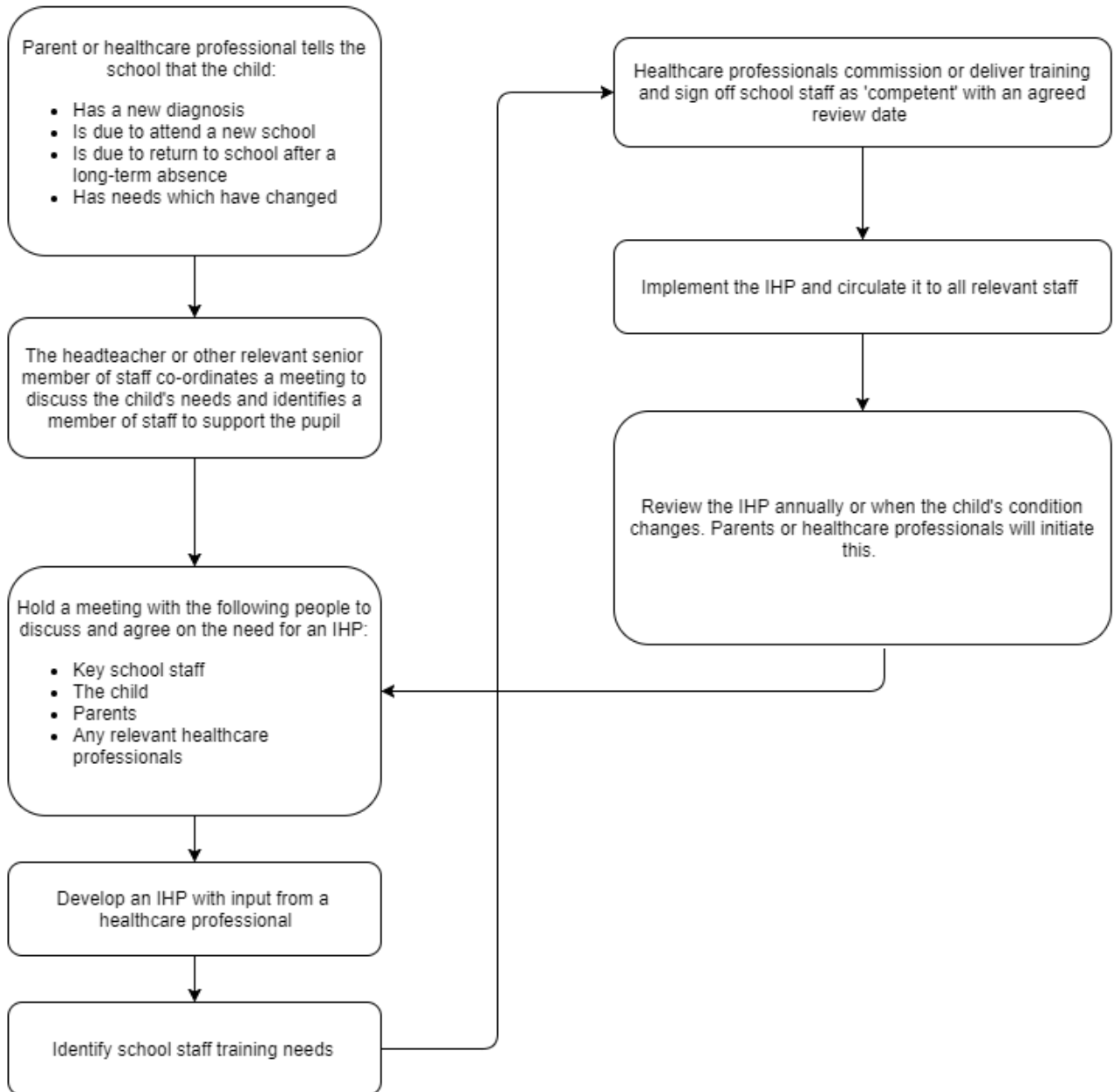
**Respect. Resilience. Responsibility. Confidence. Co-operation. Compassion.**

*Be strong and courageous. Do not be afraid; do not be discouraged,  
for the Lord your God will be with you wherever you go. – Joshua 1:9*





## ST MICHAEL & ALL ANGELS C. E. (FOUNDATION) PRIMARY AND PRE-SCHOOL



**Respect. Resilience. Responsibility. Confidence. Co-operation. Compassion.**

*Be strong and courageous. Do not be afraid; do not be discouraged, for the Lord your God will be with you wherever you go. – Joshua 1:9*